

## Workflow: TapeStation – Genomic center

1. Random
2. Samples preparation
3. TapeStation
4. Software

### Random: preparation before start



Quibit + Q. Eppendorf on the shelf

## Workflow: sample preparation



### High sensitivity Sample Buffer and High Sensitivity D1000 screenTape

#### Plate

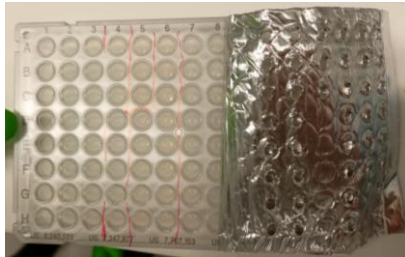


Plate is possible to use more times  
( label the used wells)



vortex  
for while



spin – don't forget balance



just random, I did (30s; 1000 rcf)

#### Strips



vortex on bench next to PC  
sometimes already set to 1 min

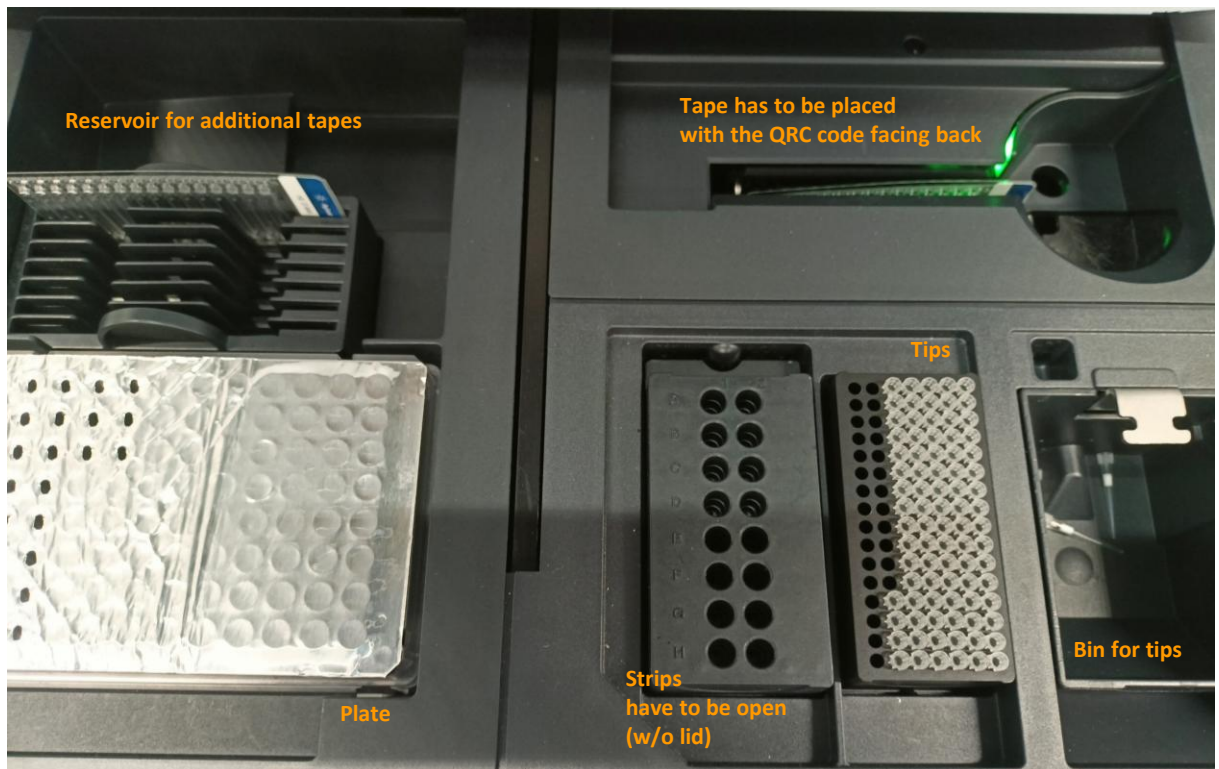
spin down  
on the desk centrifuge

## Workflow: TapeStation



### High Sensitivity D1000 screenTape

- has to be placed with the QRC code facing back
- can be partially use (it is visible) – TapeStation will automatically read
- if needed more Tapes – place in reservoir – will be automatically replaced



### Tips

- not necessary to use full box just find some around with sufficient amount

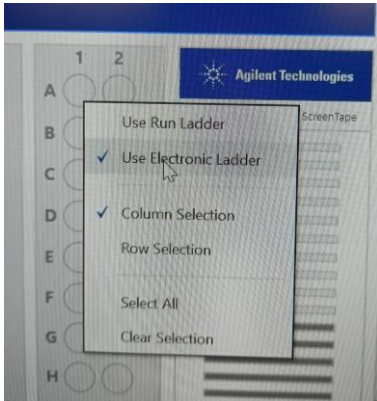
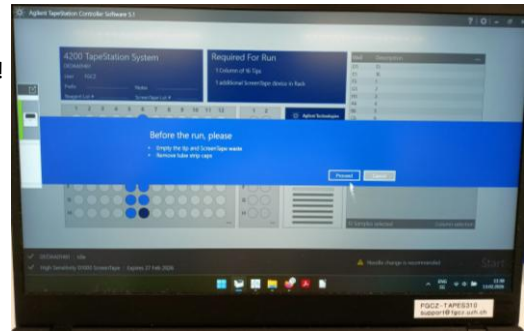
### After measurement

- empty bin with tips and keep/trash tape



# Workflow: Software

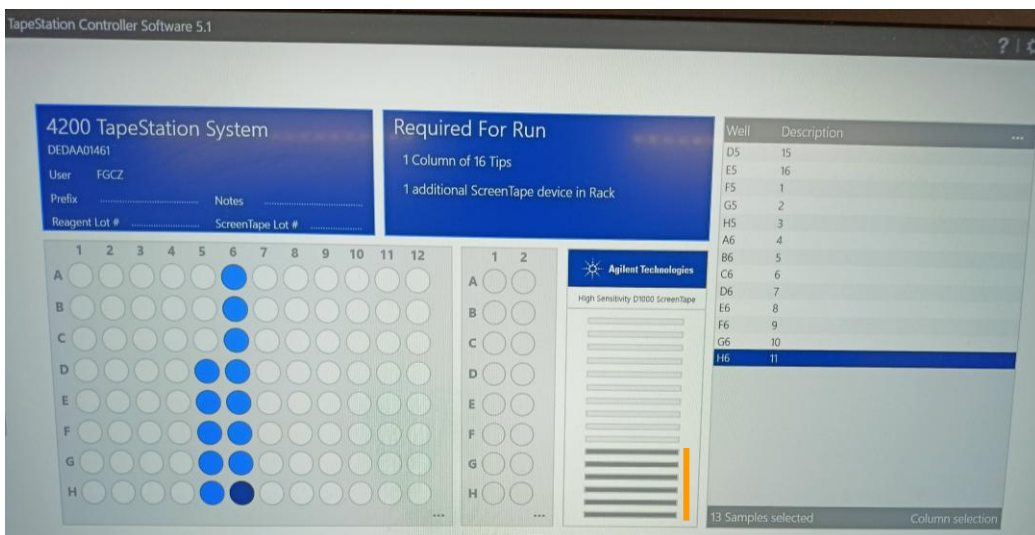
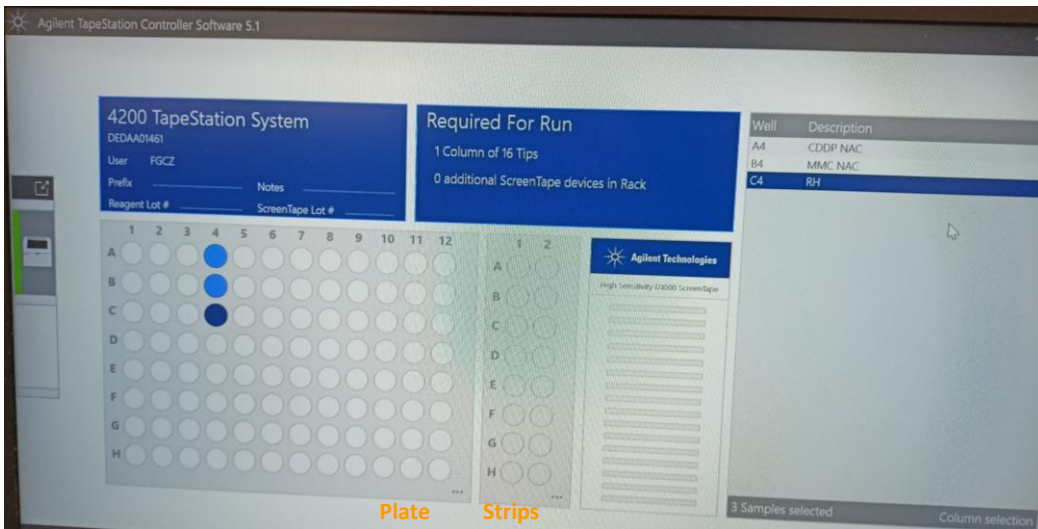
Warning before run!



Position A1 is always for ladder

- right click A1
- select "Use Electronic Ladder!"
- the analysis software requires the Ladder

Select position of samples  
and  
name the samples (Well and Description)



These columns were already used

## Workflow: Software

### Genomic center UZH

- create your folder on the descope

### Comparison (bar up; the last option)

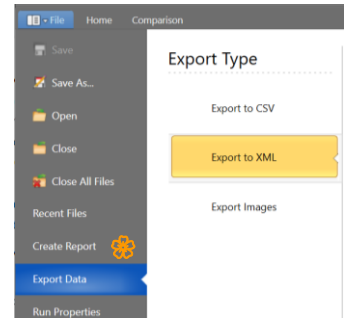
- select samples (only click)
- save comparison file (upper bar, last icon)

### Home

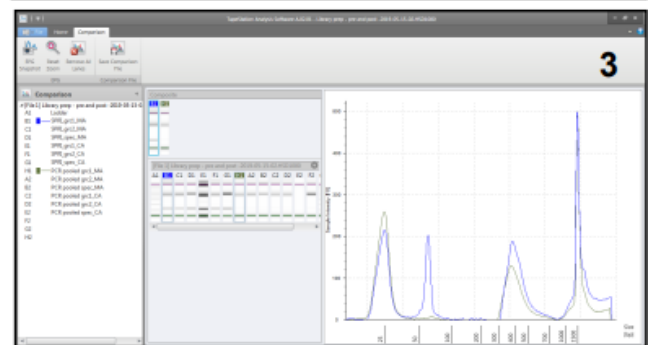
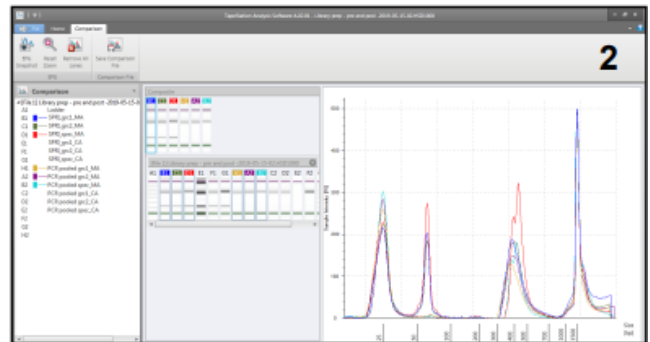
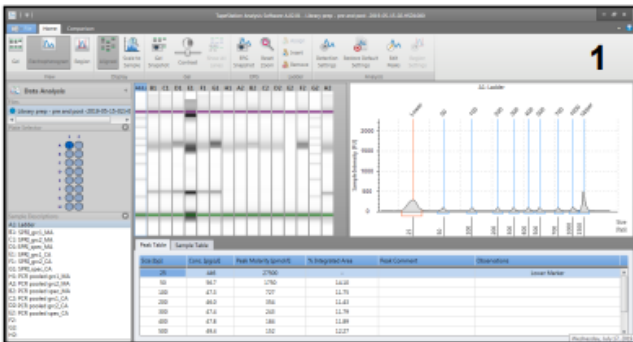
- to see the runs
- select Regions
  - Click Region
  - Region Settings
  - Select region: define range (150 – 1000)
  - Note: for R-loop Cut & Tag should be 180 – 600 bp, up to 800 bp)

### File

- Export data
  - CSV (excel)
    - Sample table: concentrations
    - Peak table: all peaks
    - Region table
- Create Report 🌸

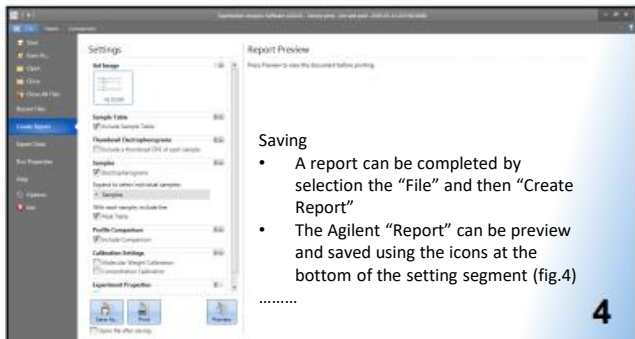


Source (link on the website, below): Agilent TapeStation; [https://www.malariagen.net/wp-content/uploads/2023/10/GbS04\\_Agilent\\_TapeStation.pdf](https://www.malariagen.net/wp-content/uploads/2023/10/GbS04_Agilent_TapeStation.pdf)



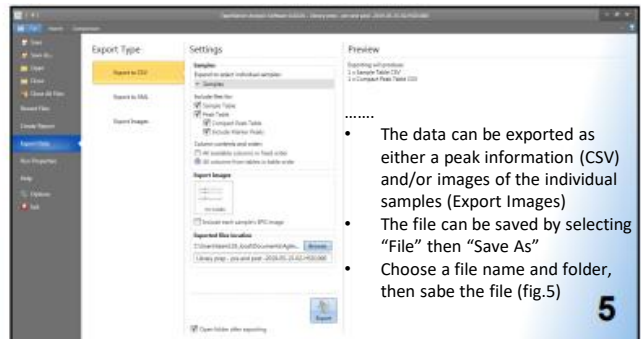
### Comparison software

- will open once the run is complete (fig.1)
- for comparison select the comparison tab (fig.2)
- specific samples can be compared by selecting and de-selecting sample within the comparison window (fig.2&3)
- save: by selecting "Save Comparison File" ....



### Saving

- A report can be completed by selection the "File" and then "Create Report"
- The Agilent "Report" can be preview and saved using the icons at the bottom of the setting segment (fig.4)



- The data can be exported as either a peak information (CSV) and/or images of the individual samples (Export Images)
- The file can be saved by selecting "File" then "Save As"
- Choose a file name and folder, then save the file (fig.5)

## **Workflow: Notes**

- Everything we got: take with us and bring it again; not store there
- Tape also store at 4°C
  
- Transfer of files
- USB
- via bfabric: as comment + write some description